

# T2 DWH: Statistics on usage

**Topic:**  
**Statistics on T2 DWH usage since April 2024**

*T2-CG Meeting 26th June 2025*

# Key facts on usage statistics

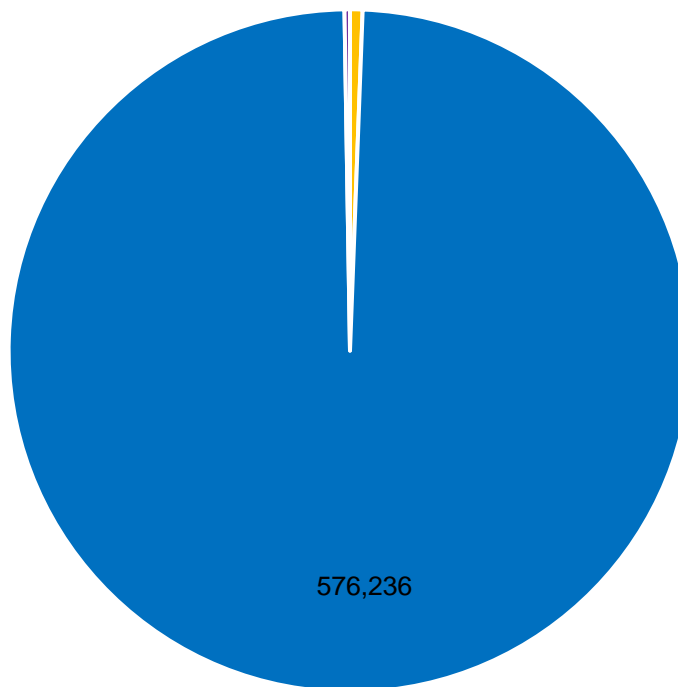
## Content:

- Available data from April 2024 to May 2025
- Executions for each report group & execution type
- Overview on execution times
- Data on single report level
- Analysis of reasons for failed executions
- Usage per party type
- Comparison to data from April 2024 to April 2025 (=last presentation)

## Not included:

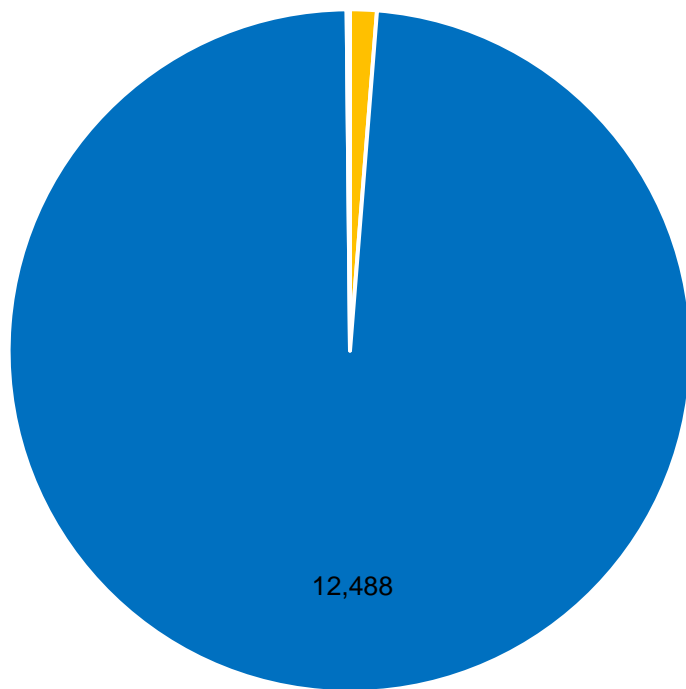
- Data since Go-Live until March 2024

# Overall executions (success)



■ Enterprise Data Warehouse (Historic Model) ■ Enterprise Data Warehouse (Model) ■ Enterprise Data Warehouse (Model) HOT FIX

# Overall executions (failed)



■ Enterprise Data Warehouse (Historic Model) ■ Enterprise Data Warehouse (Model) ■ Enterprise Data Warehouse (Model) HOT FIX

# Reasons for failed executions (based on 04/24 – 05/25)

## Long running UDRs (4005 of 12668 – 32%)

- RSV-SRV-0063 An error occurred while executing the 'asynchRun\_Request' command / XQE-DAT-0001 Data source adapter error (SQL error)
- RSV-SRV-0063 An error occurred while executing the 'promptPagingForward\_Request' command / XQE-DAT-0001 Data source adapter error (SQL error)
- RSV-SRV-0063 An error occurred while executing the 'asynchRunSpecification\_Request' command / XQE-DAT-0001 Data source adapter error (SQL error)

## Canceled by user (3777 of 12668 – 30%)

- RSV-SRV-0063 An error occurred while executing the 'promptPagingForward\_Request' command / XQE-CON-0007 The request was canceled by the user
- RSV-SRV-0063 An error occurred while executing the 'asynchRunSpecification\_Request' command / XQE-CON-0007 The request was canceled by the user
- RSV-SRV-0063 An error occurred while executing the 'asynchRun\_Request' command / XQE-CON-0007 The request was canceled by the user

# Reasons for failed executions (based on 04/24 – 05/25)

## Not updated scheduled reports “missing parameters” (3657 of 12668 – 29%)

- XQE-QRY-0404 There are parameters or variables that require values
- RSV-SRV-0063 An error occurred while executing the 'asynchRun\_Request' command / XQE-PLN-0019 Need to resolve prompts
- RSV-SRV-0063 An error occurred while executing the 'asynchRun\_Request' command / RSV-RND-0184 A required parameter is defined but has no value
- RSV-SRV-0063 An error occurred while executing the 'promptPagingForward\_Request' command / XQE-PLN-0019 Need to resolve prompts

## Wrong configuration of schedules regarding their delivery (509 of 12668 – 4%)

- RSV-SRV-0063 An error occurred while executing the 'asynchRun\_Request' command / RSV-DST-0014 Unable to deliver the output of the report, see run history details

## UDRs not constructed the right way (287 of 12668 – 2%)

- RSV-SRV-0063 An error occurred while executing the 'promptPagingForward\_Request' command / XQE-PLN-0091 Cross joins are not permitted
- RSV-SRV-0063 An error occurred while executing the 'asynchRunSpecification\_Request' command / XQE-PLN-0091 Cross joins are not permitted
- RSV-SRV-0063 An error occurred while executing the 'asynchRun\_Request' command / XQE-PLN-0091 Cross joins are not permitted

# Recommendations on failed executions

## Long running UDRs

- In case of UDRs with a run time of several hours please open a dedicated ticket

## Not updated scheduled reports „missing parameters“

- Please check and update your scheduled reports

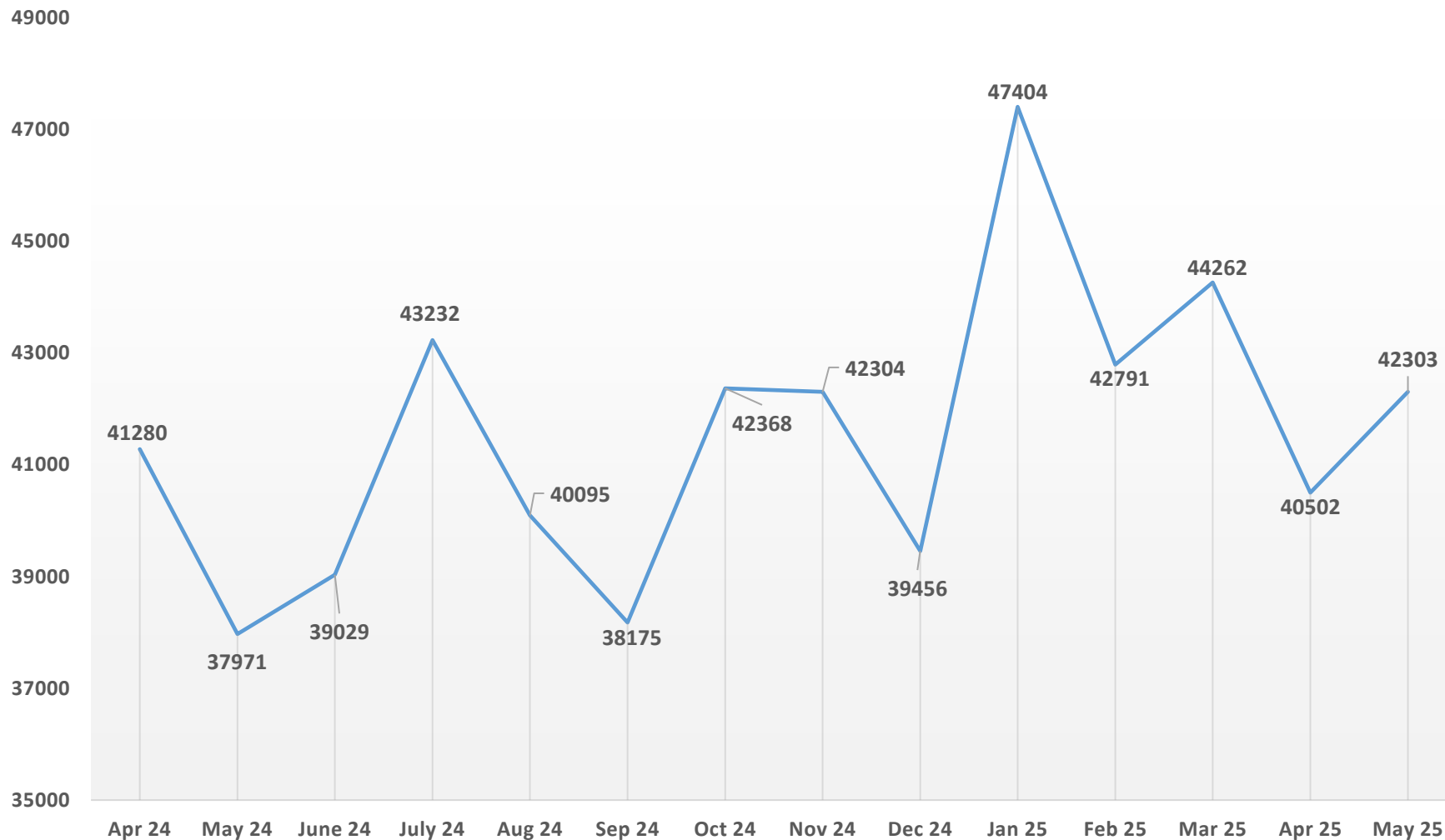
## Wrong configuration of schedules regarding their delivery

- Please check and update your scheduled reports

## UDRs not constructed the right way

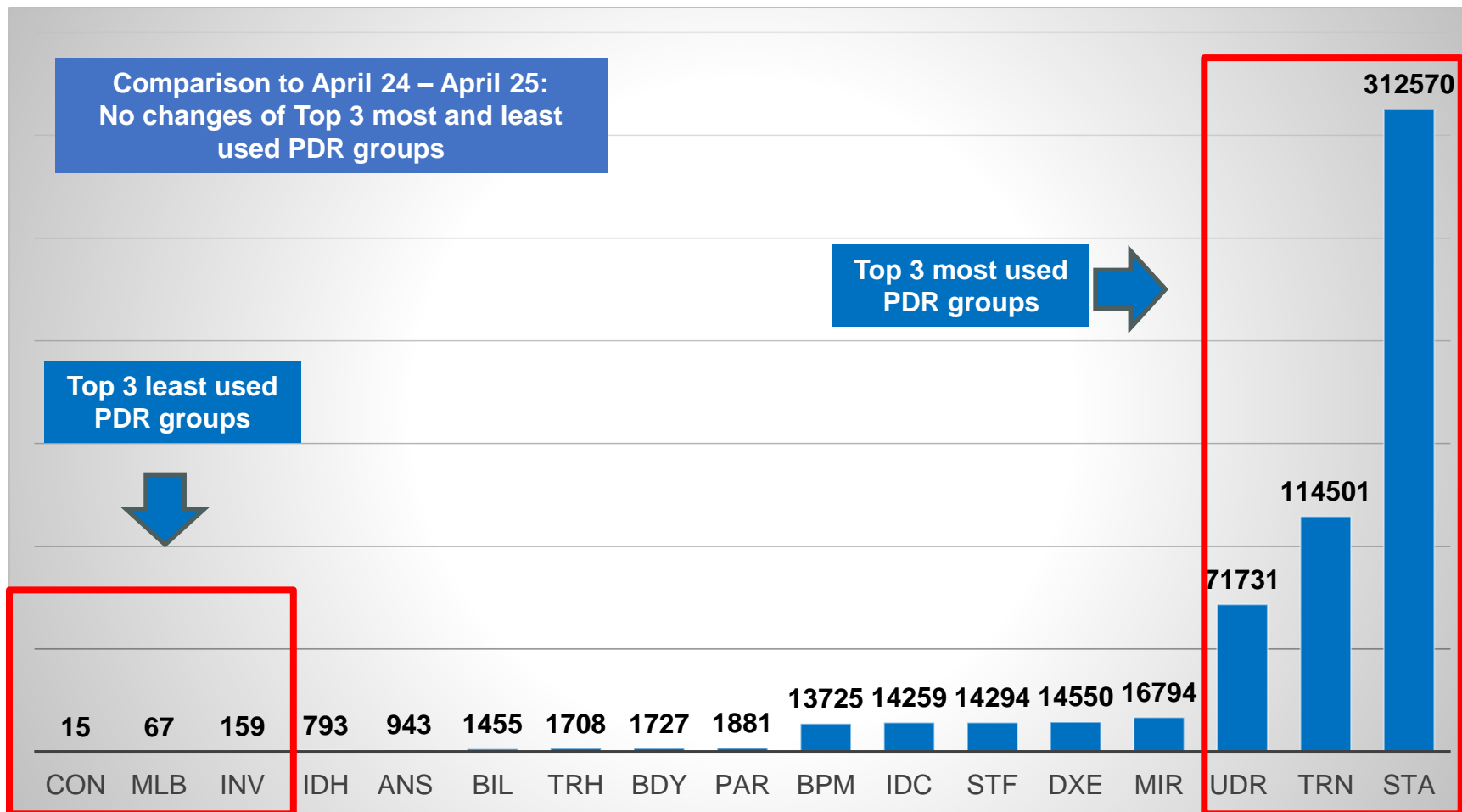
- Please correct the UDR or open a dedicated ticket and ask for support

# Executions per month

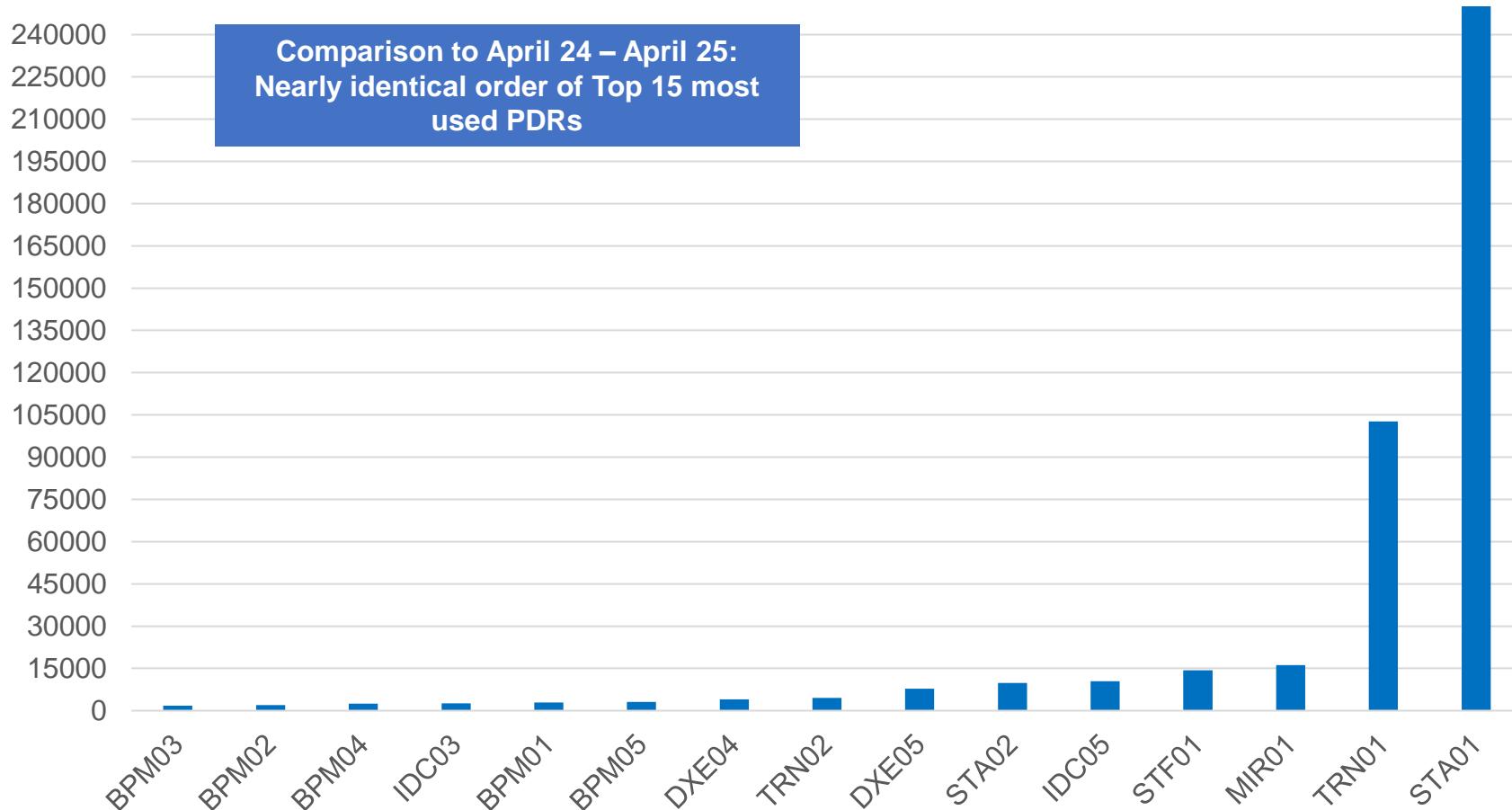




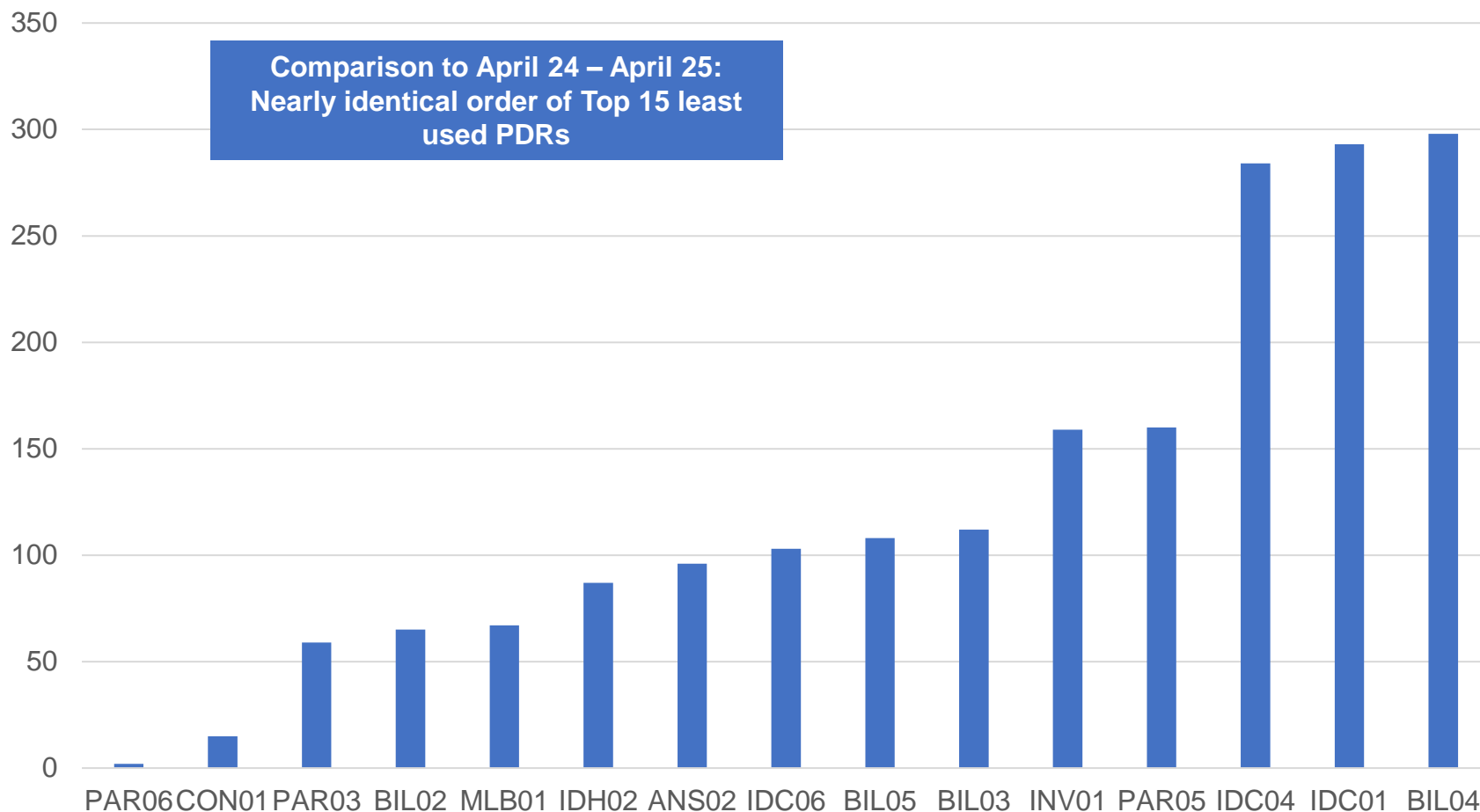
# Executions per PDR group



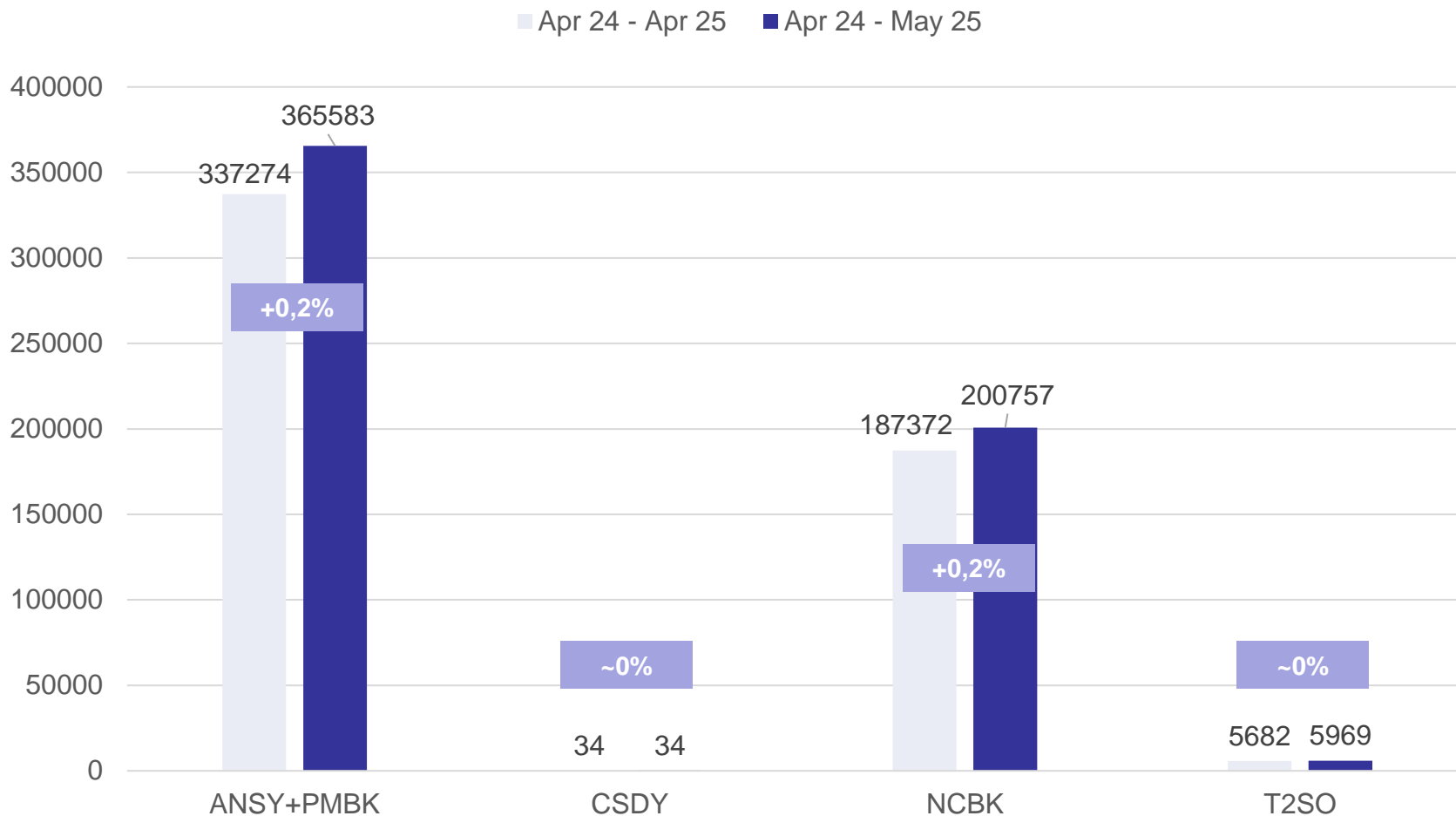
# Top 15 most used PDRs



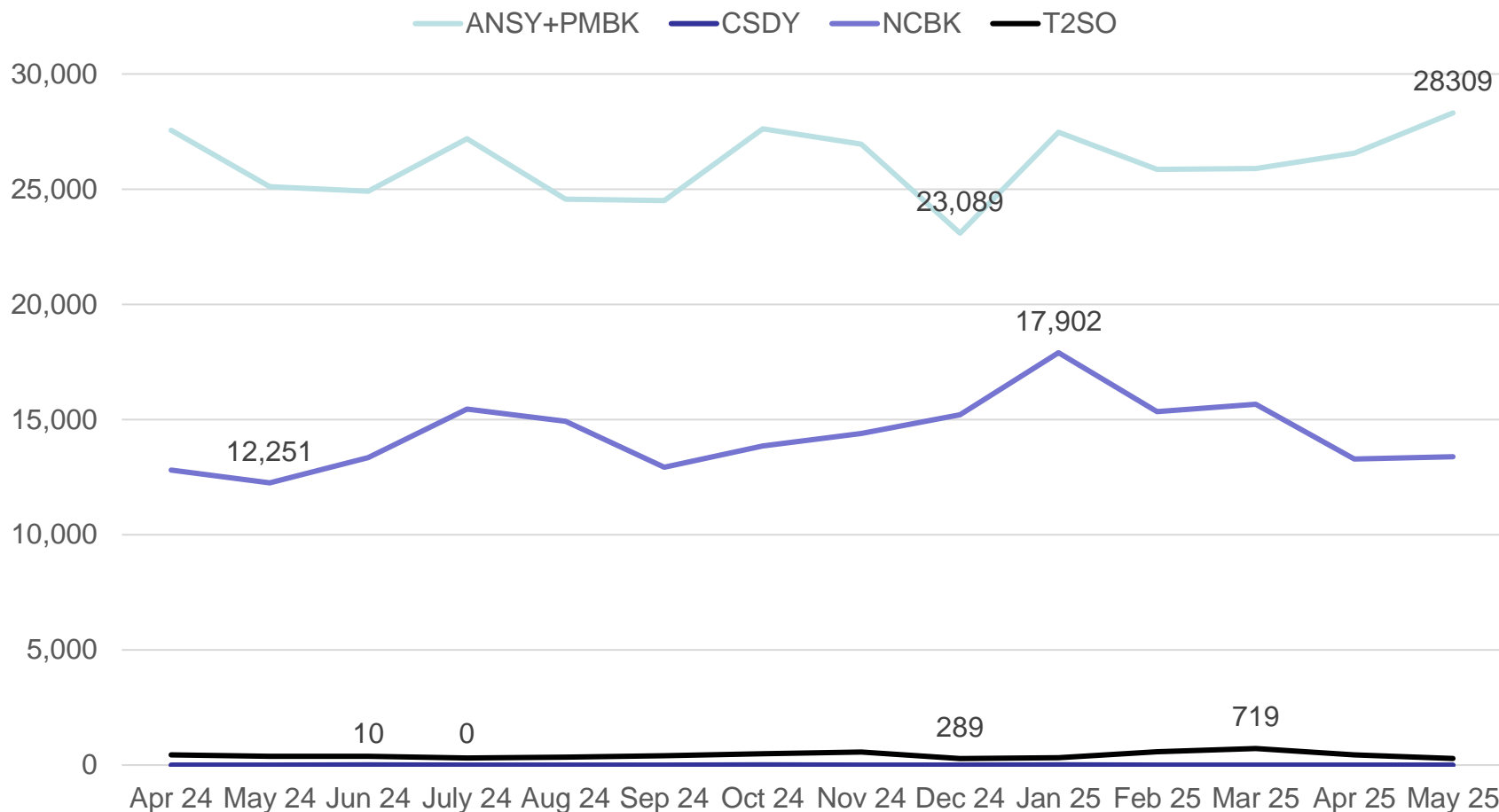
# Top 15 least used PDRs



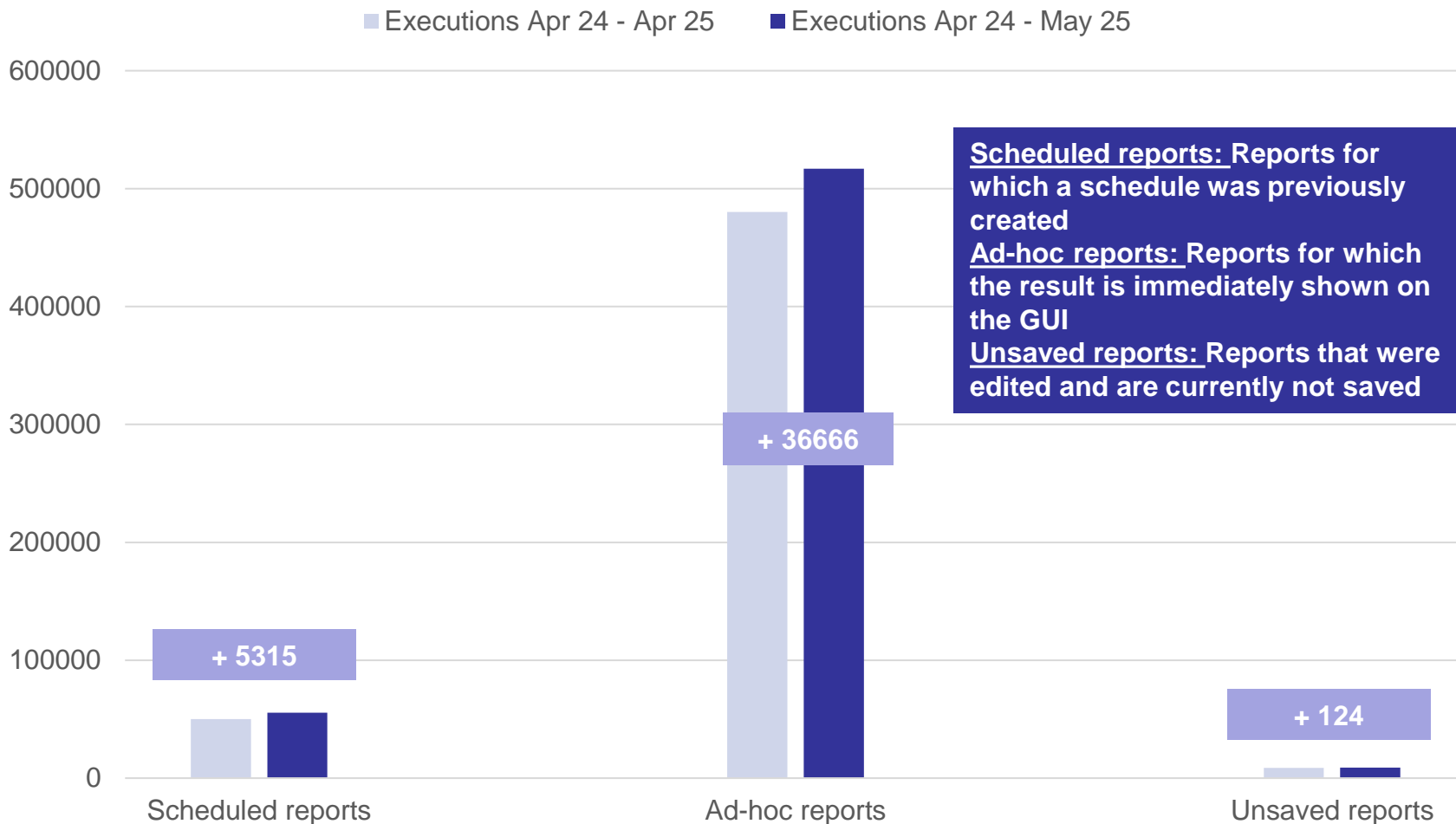
# Executions per party type



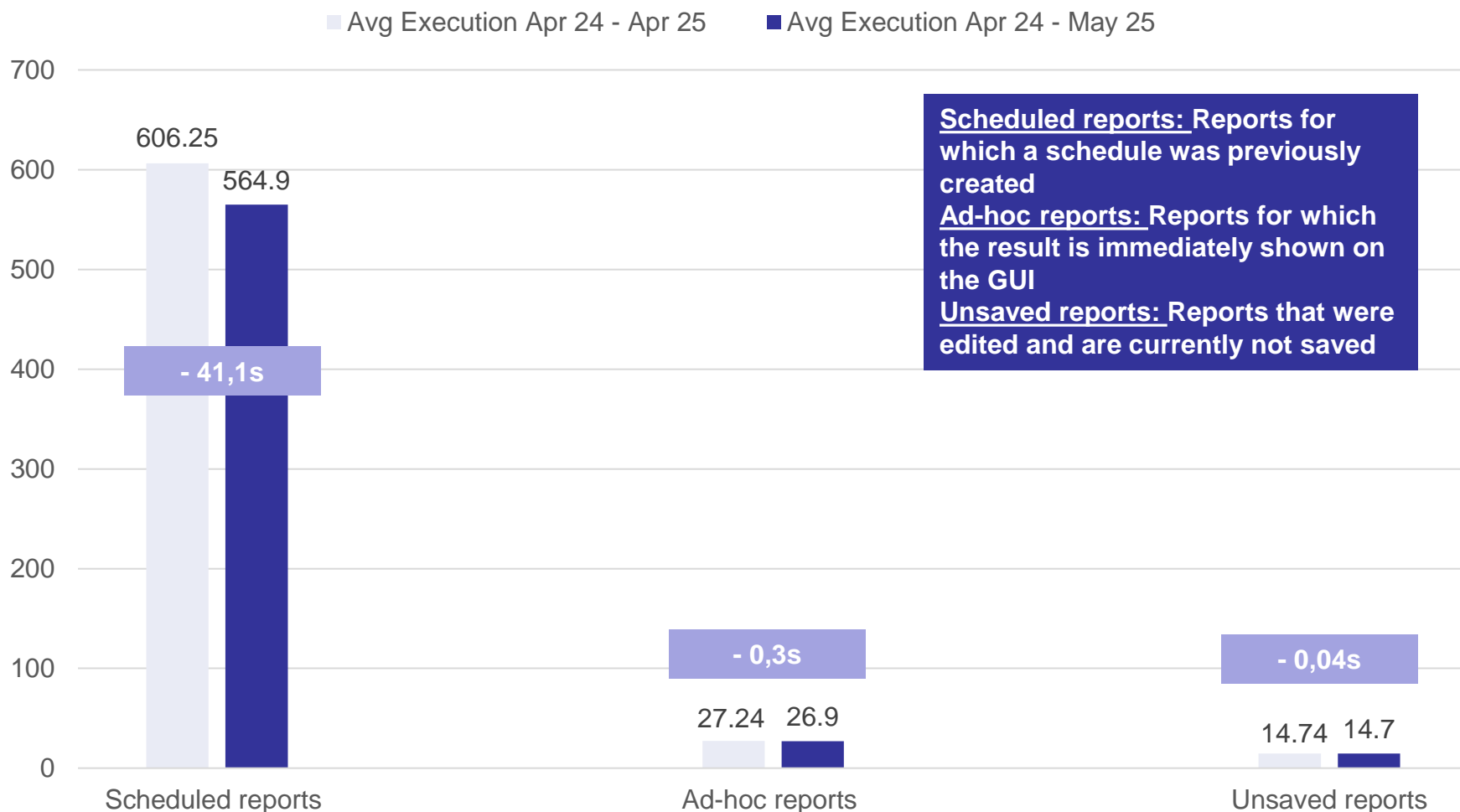
# Executions per month (per party type)



# Sum of executions per type



# Average execution time per execution type



# Summary

- **Use of the T2 DWH slightly increased → visible upward trend**
- **Order of report and report groups remained relatively stable, with slight increase**
- **Average execution time continues to decrease due to the success of the Hot Fix Packages**
- **Number of failed executions can be significantly reduced by adjustment of user actions**
- **Overall usage per party type equally increased**



# Way forward

- **Detailed usage of CB & PB users (e.g. distinction between different central banks and their respective communities)**
- **Following JUN.25, view on report usage will be improved in T2 DWH and considered for the data analysis**